

05201



Certificate of Authorization No. LB7264
Prepared by: Jeff S. Hodapp, P.S.M.
947 Clint Moore Road
Boca Raton, Florida 33487
Tel: (561) 241-9988
Fax: (561) 241-5182

ABBREVIATIONS:

P.D.E.	PUBLIC DRAINAGE EASEMENT
COR.	CORNER
D	DELTA (CENTRAL ANGLE)
D.E.	DRAINAGE EASEMENT
F.P.L.	FLORIDA POWER AND LIGHT COMPANY
L.B.	LICENSED BUSINESS
L.B.E.	LANDSCAPE BUFFER EASEMENT
L.M.E.	LAKE MAINTENANCE EASEMENT
L.M.A.E.	LAKE MAINTENANCE ACCESS EASEMENT
L.S.	LICENSED SURVEYOR
L.S.E.	LIFT STATION EASEMENT
L.W.D.D.	LAKE WORTH DRAINAGE DISTRICT
MON.	MONUMENT
O.R.B.	OFFICIAL RECORDS BOOK
P.B.	PLAT BOOK
R	RADIAL
L	ARCLENGTH
(N.R.)	NON-RADIAL
(RAD.)	RADIAL
P.B.C.R.	PALM BEACH COUNTY RECORDS
P.B.C.U.E.	PALM BEACH COUNTY UTILITY EASEMENT
PG.	PAGE
PGS.	PAGES
P.O.B.	POINT OF BEGINNING
P.O.C.	POINT OF COMMENCEMENT
P.R.M.	PERMANENT REFERENCE MONUMENT
P.S.M.	PROFESSIONAL SURVEYOR & MAPPER
P.U.D.	PLANNED UNIT DEVELOPMENT
R.A.S.	RESIDENTIAL ACCESS STREET
R.L.S.	REGISTERED LAND SURVEYOR
R/W	RIGHT-OF-WAY
SEC.	SECTION
U.E.	UTILITY EASEMENT
PT	POINT OF TANGENCY
PCC	POINT OF COMPOUND CURVATURE
NT	NON-TANGENT
D.B.	DEED BOOK
P.C.P.	PERMANENT CONTROL POINT

ELAN PALM RESERVE M.U.P.D.

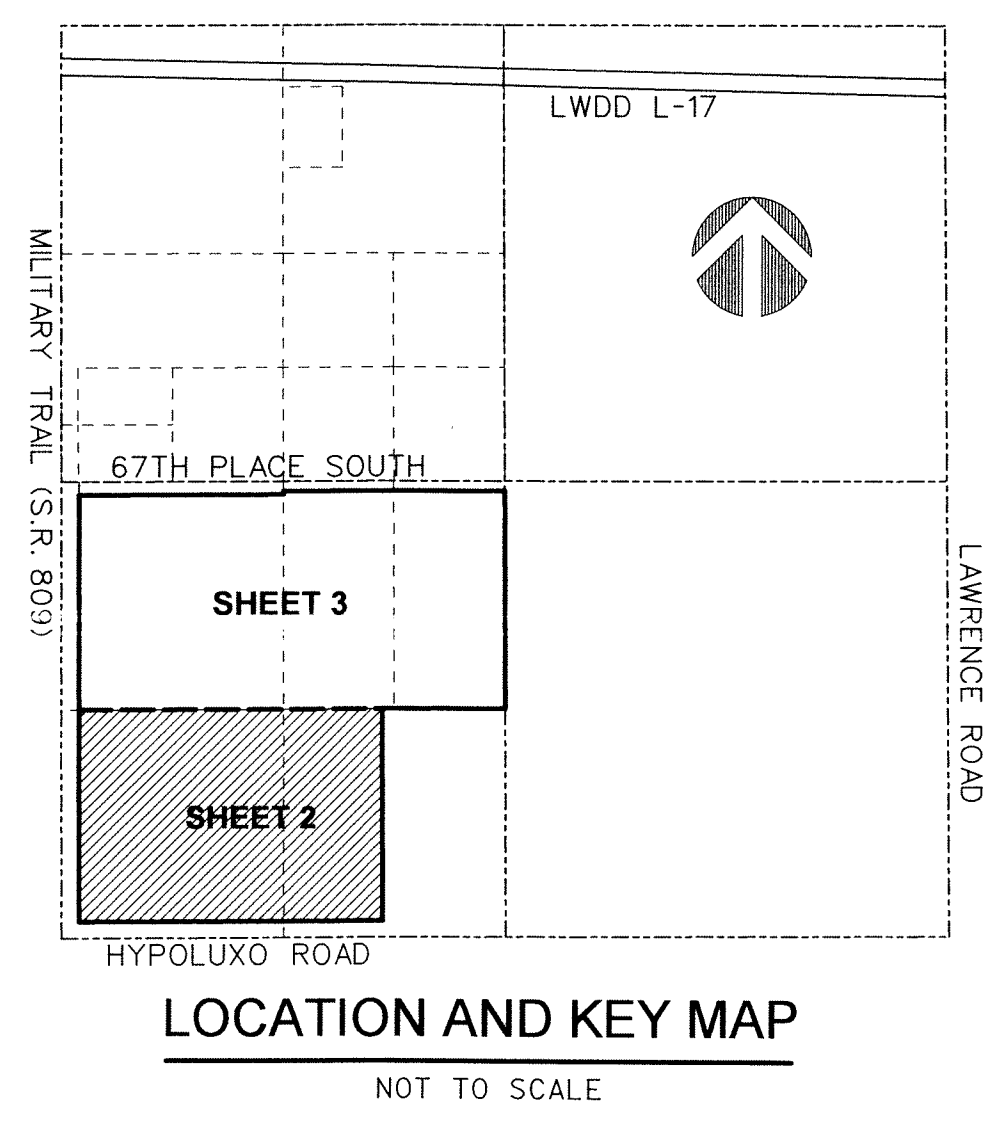
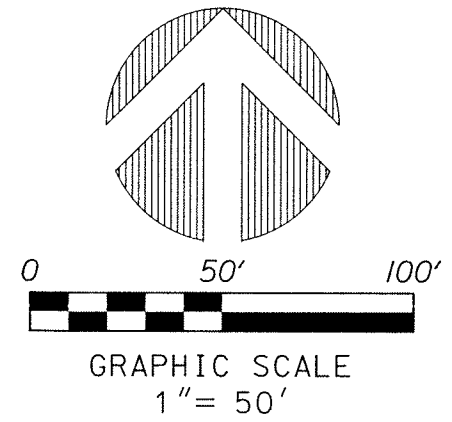
A PORTION OF THE SOUTHWEST ONE-QUARTER OF THE SOUTHEAST ONE-QUARTER OF SECTION 1, TOWNSHIP 45 SOUTH, RANGE 42 EAST, PALM BEACH COUNTY, FLORIDA.

NOTES: COORDINATES, BEARINGS AND DISTANCES

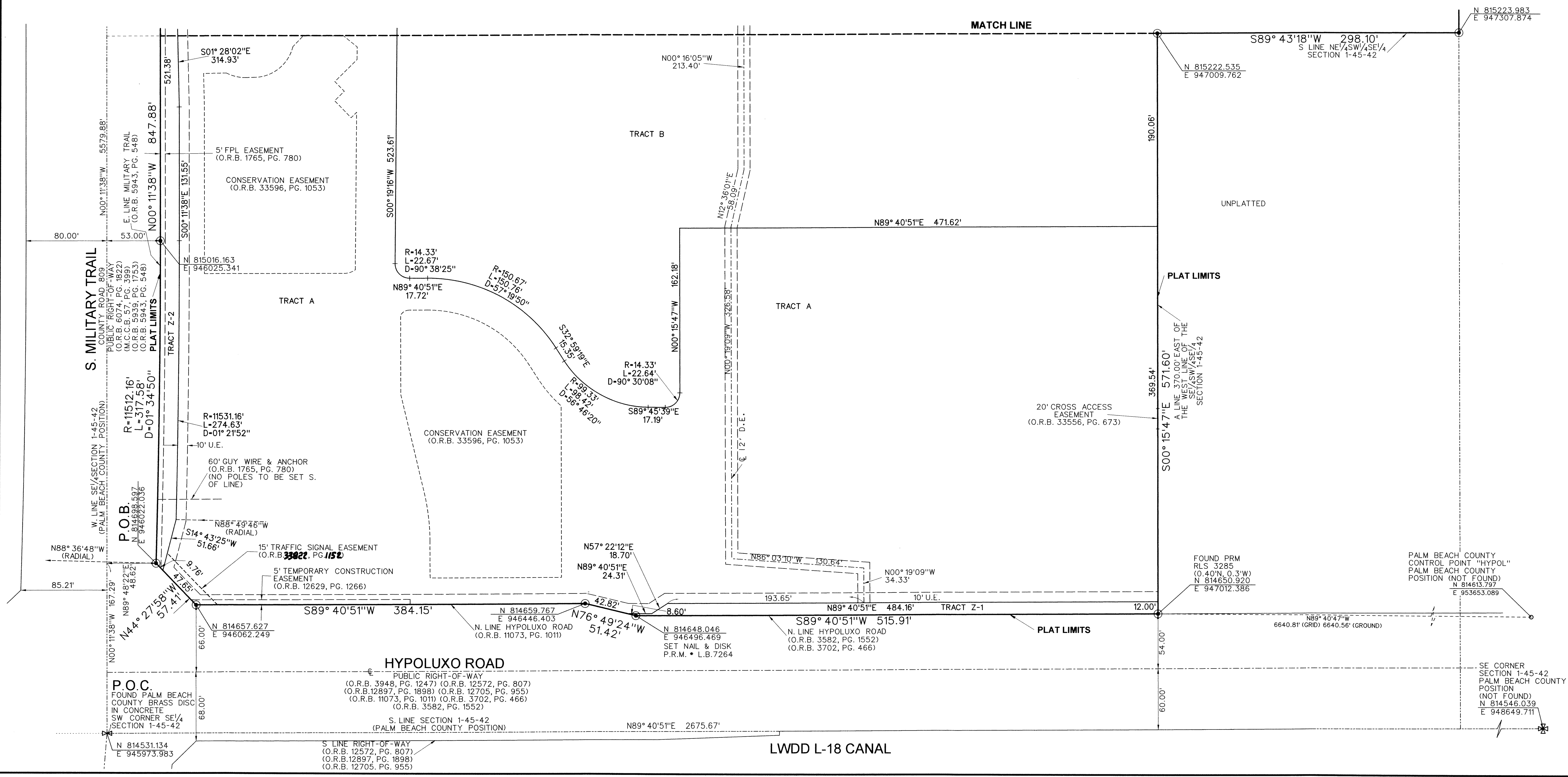
COORDINATES SHOWN ARE GRID
DATUM = NAD 83 1990 ADJUSTMENT
ZONE = FLORIDA EAST
LINEAR UNIT = US SURVEY FOOT
COORDINATE SYSTEM 1983 STATE PLANE
TRANSVERSE MERCATOR PROJECTION
ALL DISTANCES ARE GROUND, UNLESS OTHERWISE NOTED
SCALE FACTOR = 1.000038
GROUND DISTANCE X SCALE FACTOR = GRID DISTANCE
BEARINGS AS SHOWN HEREON ARE GRID DATUM,
NAD 83 1990 ADJUSTMENT, FLORIDA EAST ZONE

LEGEND:

- - SET P.R.M. (UNLESS OTHERWISE NOTED) - 4" x 4" CONCRETE MON. WITH ALUMINUM DISK STAMPED *LB7264
- - CENTERLINE
- - PERMANENT CONTROL POINT L.B. 7264



SEE SHEET 3



SE CORNER SECTION 1-45-42 PALM BEACH COUNTY POSITION (NOT FOUND)
N 814546.039
E 948649.711